



# HOLE

HOUSE OF LIMITED EDITION

WINTER COLLECTION 2026

*From Himalayan Valleys to Cobblestone Alleys*

# HOLE

---

HOUSE OF LIMITED EDITION

---

*"Where ancestral craftsmanship meets contemporary design, HOLE curates micro-editions of wearable art and timeless silhouettes from the rarest, earth-born, handloomed fabrics - tailored exclusively for the modern collector."*

# Winter Collection 2026: From Himalayan Valleys to Cobblestone Alleys



HOLE brings you the rich cultural heritage of the Himalayas through handcrafted, pure wool products. Rooted in the traditional motifs and enduring aesthetics of the Himalayan Valleys, we collaborate with local women artisans who spin, weave, knit, and crochet using skills passed down through generations. Every piece they make is a unique expression of their creativity and the mountain rhythms they embrace.

Our collections are curated with indigenous wool sourced from the Gaddi shepherds, who traverse pristine Himalayan pastures with their flocks. This wool is meticulously hand-spun, naturally dyed with local flora, and transformed into exquisite garments and accessories. Each item is a narrative—of sustainable practices, traditional craftsmanship, and the breathtaking mountain landscape.

By wearing a HOLE curated garment, you wrap yourself in a story of slow living, ethical choices, and the enduring legacy of mountain communities. This collection showcases just how versatile and contemporary traditional textiles can be. Sitting with the women of the valley, surrounded by the crisp mountain air, we dreamed up patterns that feel like home, colours that echo the landscape, and textures that connect you directly to the earth and mountain skies.

But this collection isn't just about designs—it's about the land and the people. Each piece is brought to life with whimsical details that make it truly one of a kind—a strewn marigold here, a playful pompom there, and hand-sewn touches that reflect the artisans' individuality.



The Tara Short Jacket

# The Tara Short Jacket

---

*The Tara jacket, naturally dyed with madder root, is inspired by the traditional Tara motif and pattu checks. Its short, versatile design pairs effortlessly with various outfits. Featuring a modern structured collar, it blends heritage-inspired craftsmanship with contemporary style, making it a timeless and functional piece of wearable art.*





The Tara Short Jacket - Embroidered





The Nuala Unisex Jacket





The Unisex Plaid Shirt





The Check Sweater





The Chashm Crop Jumper





The Striped Sweater

# The Striped Sweater

---

*Embrace the season with our cozy, striped sweater, blending a palette of warm autumn hues. Designed for both style and comfort, this piece features a classic crew neck and ribbed detailing on the cuffs and hem. Perfect for any setting, it pairs effortlessly with your favorite skirts or jeans, ensuring you stay chic and comfortable wherever you go.*





The Patchwork Pullover

# The Patchwork Pullover

---

*Our mosaic patchwork pullover is beautifully crafted with upcycled, naturally dyed woollen yarn from our production. Each piece is unique and reminiscent of mountain landscapes - terraced fields, apple blossoms, and snow-capped peaks. Handspun and handknit by our women artisans, each piece is individual in design and colour. Buyer note: due to the zero-waste, artisanal nature of upcycled yarn, each piece carries its own distinct color story. Orders will vary beautifully from the catalog reference.*



# HOLE

HOUSE OF LIMITED EDITION

## Buyer Line Sheet

*Winter Collection 2026*

---

# Wholesale Order Matrix

Prices in USD



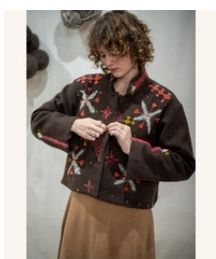
## The Tara Short Jacket

Sizing / SKU

S/M: KW25-TSJ-1

L/XL: KW25-TSJ-2

**\$350 USD**



## The Tara Short Jacket - Embroidered

Sizing / SKU

S/M: KW25-TSJE-1

L/XL: KW25-TSJE-2

**\$350 USD**



## The Nuala Unisex Jacket

Sizing / SKU

S/M: KW25-NUJ-1

L/XL: KW25-NUJ-2

**\$250 USD**



## The Unisex Plaid Shirt

Sizing / SKU

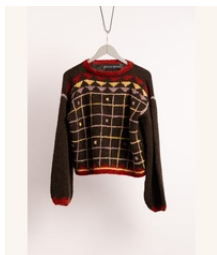
S/M: KW25-UPS-1

L/XL: KW25-UPS-2

**\$220 USD**

# Wholesale Order Matrix

Prices in USD



## The Check Sweater

Sizing / SKU

S/M: KW25-CPJ-1

L/XL: KW25-CPJ-2

**\$220 USD**



## The Chashm Crop Jumper

Sizing / SKU

S/M: KW25-CCJ-1

L/XL: KW25-CCJ-2

**\$220 USD**



## The Striped Sweater

Sizing / SKU

S/M: KW25-CC-1

L/XL: KW25-CC-2

**\$220 USD**



## The Patchwork Pullover

Sizing / SKU

S/M: KW25-CC-3

L/XL: KW25-CC-4

**\$220 USD**

# HOLE

---

HOUSE OF LIMITED EDITION

*Terms & Conditions are provided as a separate buyer document.*

*For wholesale orders, please reference the product name, size, SKU, and requested quantity.*